

VarAC for EmComm

The complete EmComm Tactical scenarios guide

V1.3



Irada Deutsch, 4Z1AC

Tactical EmComm scenarios covered in this guide

This guide provide examples to real-life EmComm tactical need and how VarAC can be leveraged to address them.

1. EmComm operators' "Check-ins"
2. Sending an emergency alert to all EmComm operators.
3. Send emergency VMail without direct link to your destination.
4. Sending an images of a missing person
5. Group chat/check-ins of all EmComm operators
6. Live chat between stations with no direct link (through digipeater)
7. Find a path to an unreachable station
8. Send your current location using VarAC GPS integration

* Please note: When showcasing digipeaters use cases – these are available with VaraFM only.

Tactical need #1

EmComm operators' check-ins



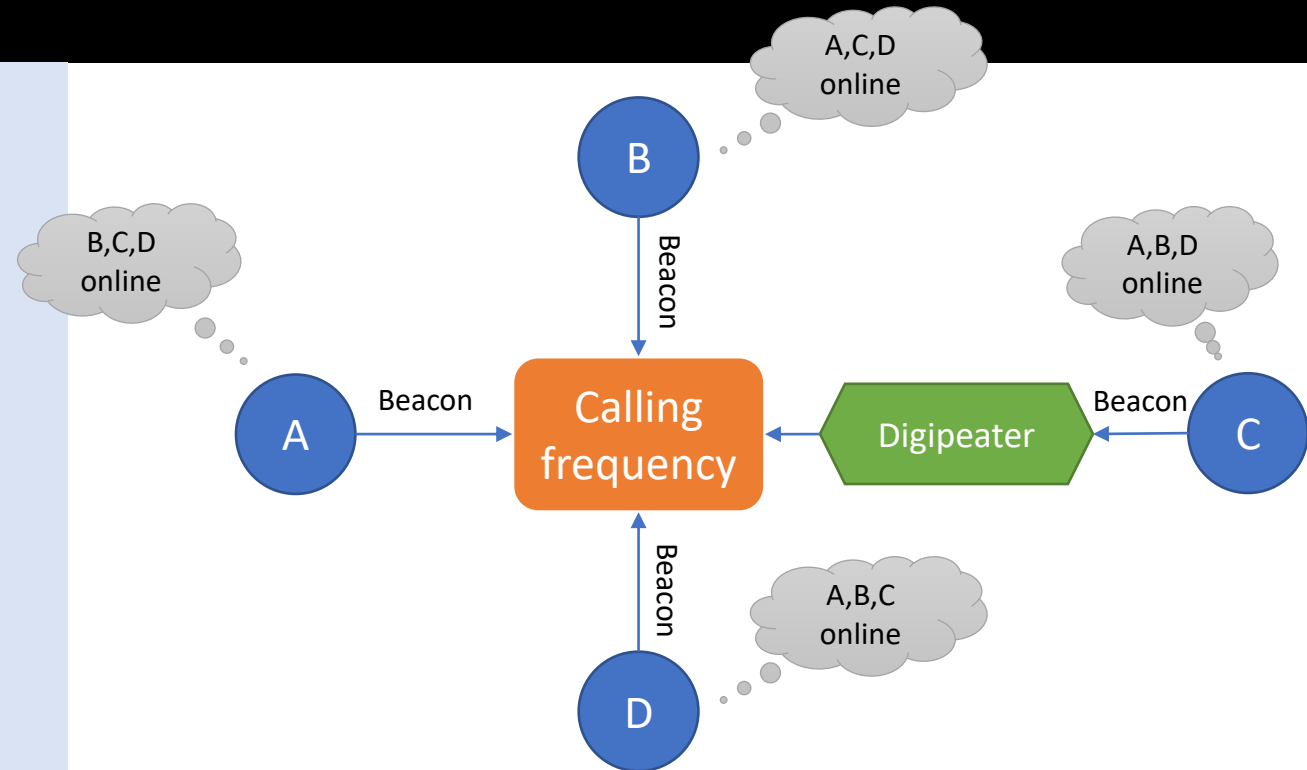
VarAC Features used:

Beacons

VarAC Beacons are a great tool to notify the your EmComm network that you are online and available for any type of communication.

How

1. All operators set a beacon to fire every X minutes on an agreed calling frequency.
2. All Operators can see each other on the "Last heard beacons" with the latest timestamp
3. Digipeaters can be used to extend reach



Tactical need #2

Sending an emergency alert to all EmComm operators.

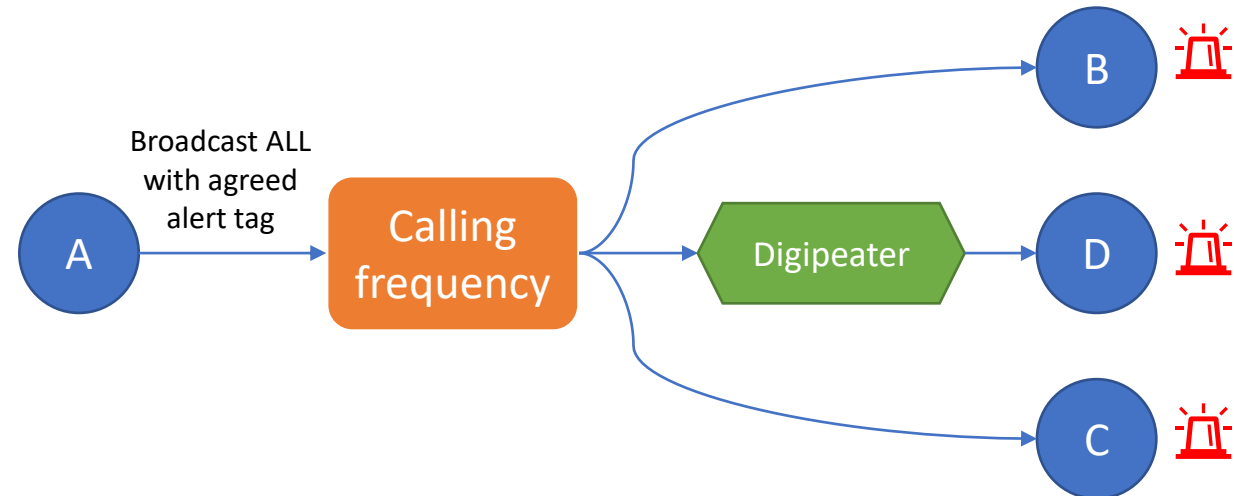


VarAC Features used:
Alert tags, Broadcast

Broadcast can be used as a one-to-many transmission that can also propagate through VaraFM digipeaters. Coupled with a pre-defined alert tag, it is a great way to quickly distribute a critical message through the entire EmComm network in seconds.

How

1. Define an alert tag and share among all your EmComm networks. (Alert tags definition is stored in a file you can easily distribute prior to the operation.)
2. If VaraFM digipeater is available, configure it under settings
3. Send a Broadcast to “ALL” with the alert tag as part of the text.
4. A visual and vocal alert will be triggered on all EmComm stations



Tactical need #3

Send emergency VMail without direct link to your destination



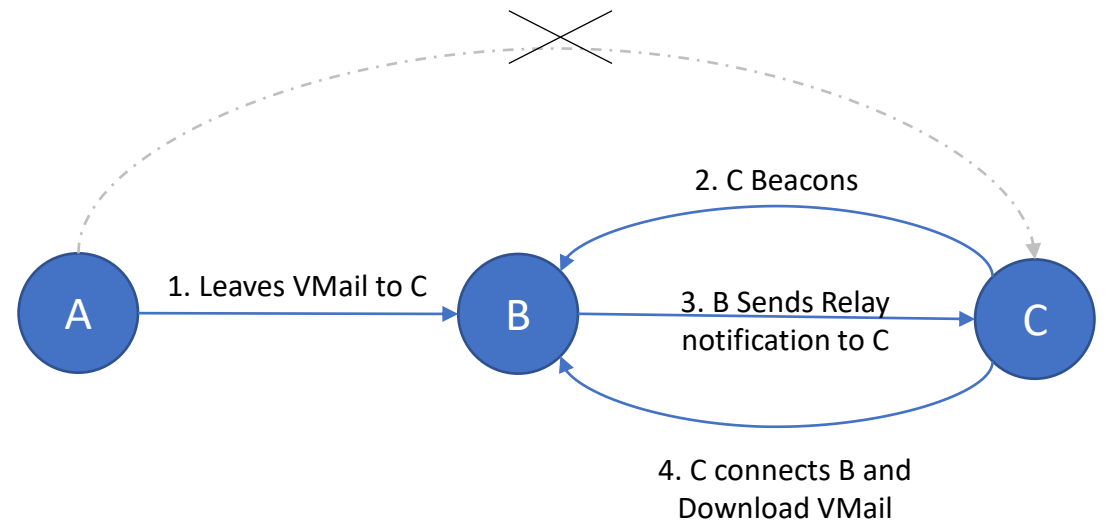
VarAC Features used:

VMails, Parking, Relay notifications, Beacons

VarAC allows you to send VMail through 3rd parties. VMails can be temporarily parked at a 3rd party station. Once the destinations beacons, the 3rd party notifies it that there is a parked VMail waiting to be collected.

How?

1. A connects B and leave a VMail for C
2. C Beacons
3. When B decodes the beacons, it send C a “relay notification alert”
4. C Connects B.
5. B relays the message to C



Tactical need #4

Sending a images of a missing Person

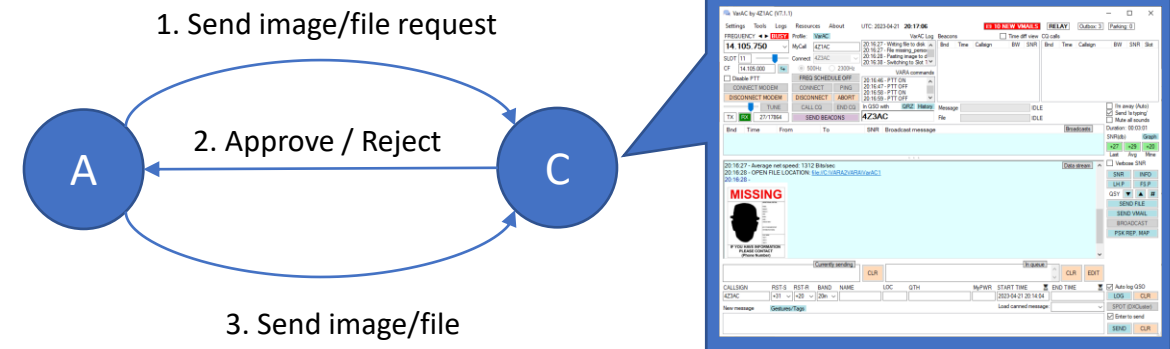


VarAC Features used:
Send file

VarAC provides lightening fast file transfer including images. Received images appear on screen in the conversation windows (Like in instant messaging apps). The destination can set the file size under which files will be received without manual approval.

How?

1. A connects B
2. A sends a “send file request”
3. B approves automatically/manually
4. A sends the image
5. Image appears on B screen
6. Digipeaters can be used



Tactical need #5

Group chat/round-table/check-ins
of all EmComm operators

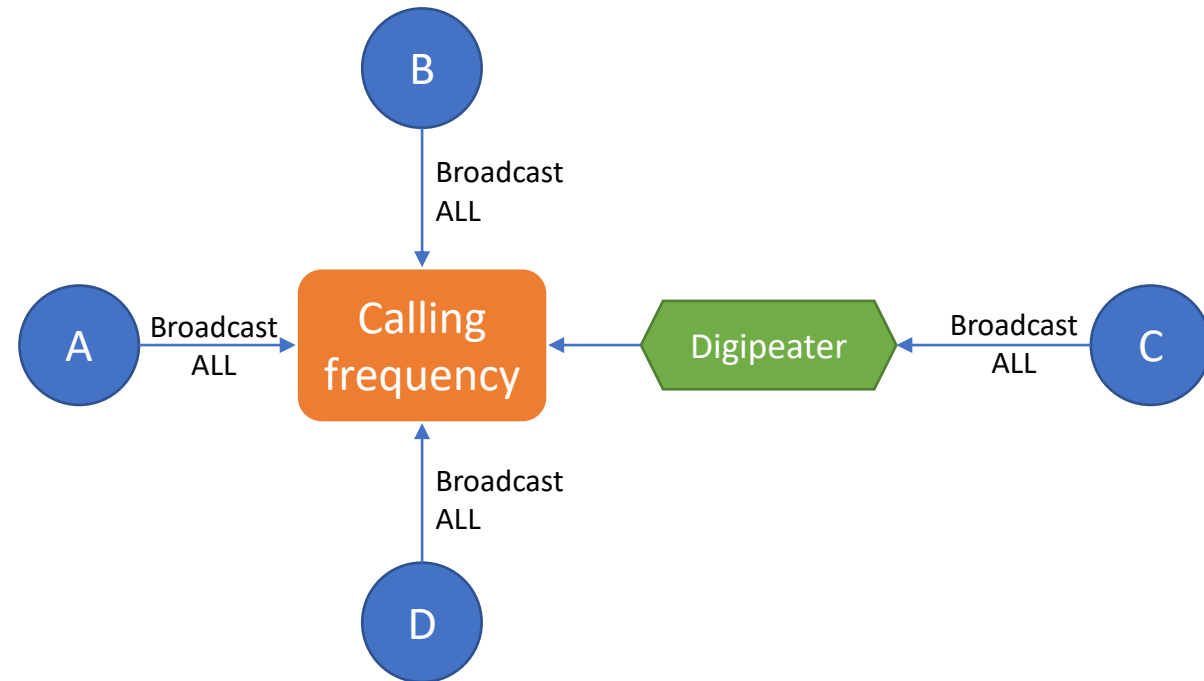


VarAC Features used: Broadcasts

VarAC broadcasts allows multiple operators to conduct a round-table chats in a many-to-many fashion. Broadcasts can also be distributed through digipeaters to reach a longer distance while allowing more operators to participate in the round-table.

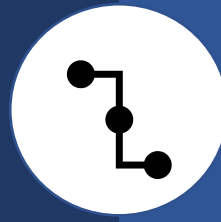
How?

1. All EmComm operators are tuned on the same frequency.
2. Each station send a broadcast to "ALL"
3. VaraFM Digipeaters can also be used.



Tactical need #6

Live chat between stations with no direct link

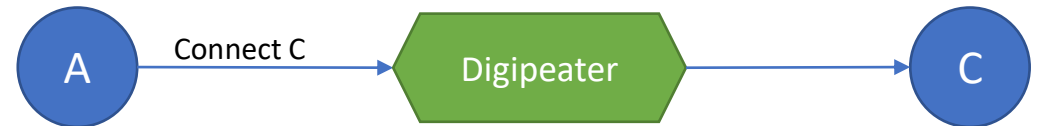


VarAC Features used:
Chat, Digipeater

Chatting with VarAC is possible either direct or through VaraFM digipeaters. Up to 2 digipeaters are allowed. This allows a live chatting over 2 hops.

How?

1. Set a digipeater under settings
2. Type in the destination callsign
3. Connect



Tactical need #7

Find a VMail path to an unreachable station - Way #1

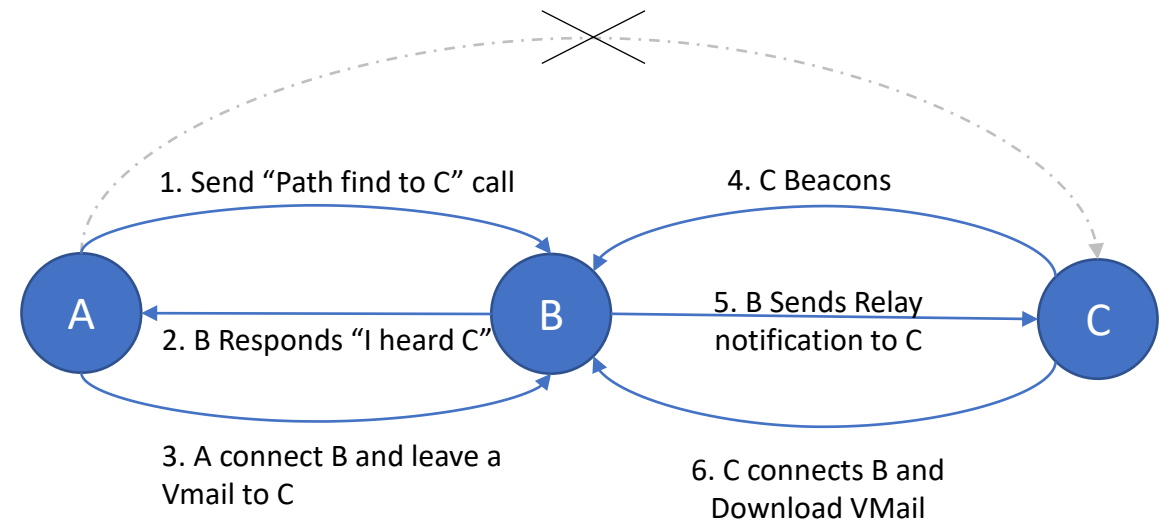


VarAC Features used:
VMail, Path finder

VarAC provides you with ways to find a path for VMAIL relay to a station you can not access directly.

How?

1. A Sends a "Path find to C" call.
2. B Responds that it heard C
3. A Connects B,
4. A leaves a Vmail to C at B.
5. B notifies C about a parking Vmail.
6. C connects B to collect the Vmail



Tactical need #7

Find a VMail path to an unreachable station - Way #2

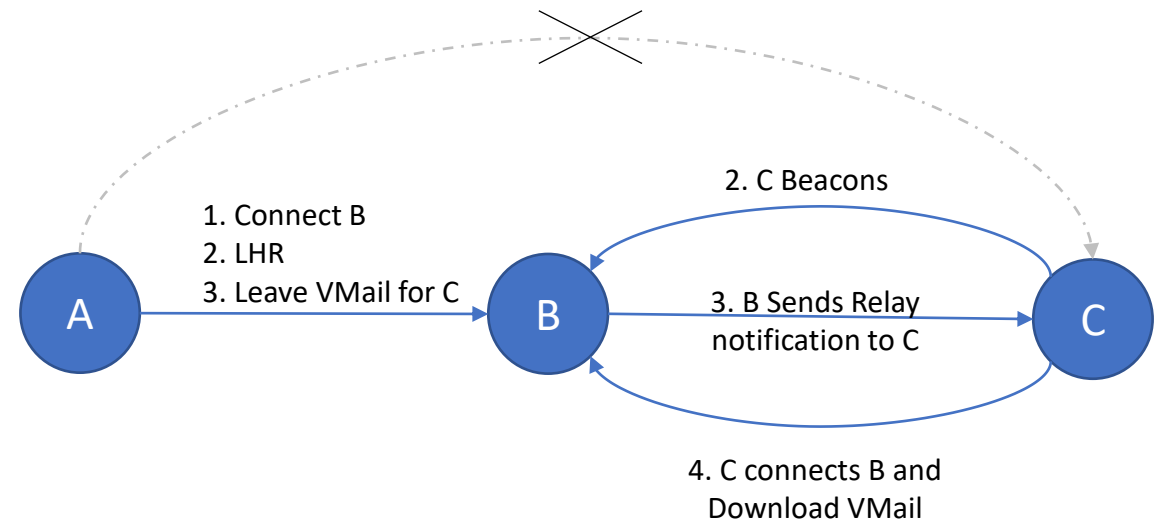


VarAC Features used:
VMail, Last Heard (LHR)

VarAC provides you with ways to find a path for VMAIL relay to a station you can not access directly.

How?

1. A intercepts a beacon from B.
2. A Connects B and pulls last heard stations list using the LHR button.
3. If the destination station C is on that list, A leaves a Vmail to C at B.
4. B notifies C about a parking Vmail.
5. C connects B to collect the Vmail



Tactical need #8

Send your location
using GPS integration

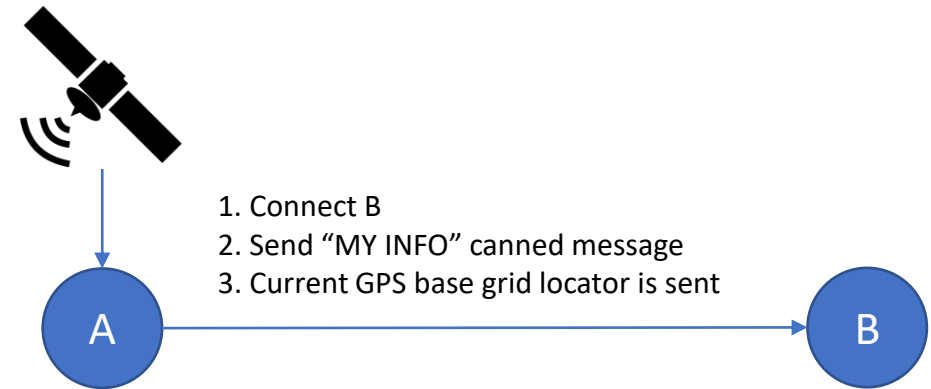


VarAC Features used:
GPS integration, canned messages

Effortlessly maintaining real-time updates of your location during a crisis ensures your team remains informed of your precise whereabouts.

How?

1. Setup GPS integration under Settings.
2. VarAC reads your GPS position and transform it to grid locator.
3. While connected, Sent your Info using F1.
4. Your location is sent and populated on the other side log.



VarAC Tactical drills checklist

#	Tactical scenario	Status	Comments
1	EmComm operators' "Check-ins"	<input type="checkbox"/> Success <input type="checkbox"/> Fail <input type="checkbox"/> Skip	
2	Sending an emergency alert to all EmComm operators.	<input type="checkbox"/> Success <input type="checkbox"/> Fail <input type="checkbox"/> Skip	
3	Send emergency VMail without direct link to your destination.	<input type="checkbox"/> Success <input type="checkbox"/> Fail <input type="checkbox"/> Skip	
4	Sending an images of a missing person	<input type="checkbox"/> Success <input type="checkbox"/> Fail <input type="checkbox"/> Skip	
5	Group chat/check-ins of all EmComm operators	<input type="checkbox"/> Success <input type="checkbox"/> Fail <input type="checkbox"/> Skip	
6	Live chat between stations with no direct link (through digipeater)	<input type="checkbox"/> Success <input type="checkbox"/> Fail <input type="checkbox"/> Skip	
7-A	Find a path to an unreachable station (Way #1)	<input type="checkbox"/> Success <input type="checkbox"/> Fail <input type="checkbox"/> Skip	
7-B	Find a path to an unreachable station (Way #2)	<input type="checkbox"/> Success <input type="checkbox"/> Fail <input type="checkbox"/> Skip	
8	Send your location using GPS integration	<input type="checkbox"/> Success <input type="checkbox"/> Fail <input type="checkbox"/> Skip	